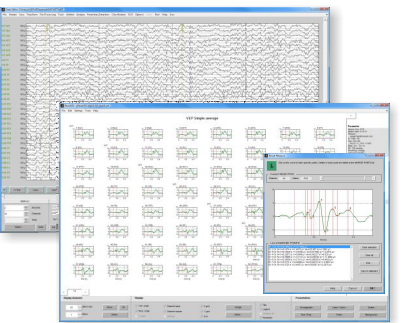


g.tec medical engineering GmbH, office@gtec.at, www.gtec.at, tel. +43 7251 22240, fax +43 7251 22240 39



- Special interest in
- VEP (early/middle lat.)
 - cognitive VEP (P300, ...)
 - SSVEP
 - MMN
 - SSEP (electric/tactile)
 - other:
 - AEP (early/middle lat.)
 - cognitive AEP (P300, ...)
 - ABR/BAEP
 - ASSR
 - Motor EP

Check products of interest and request an offer per fax (+43 7251 22240 39) or e-mail (office@gtec.at) !