



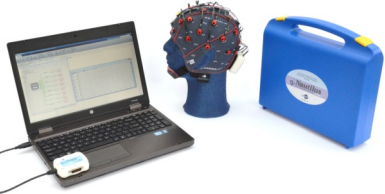
- (A) g.MOBilab+**
- EEG version
  - multi-purpose version



- (B) g.USBamp**
- 16 channels
  - 32 channels
  - 48 channels
  - 64 channels



- (C) g.HIamp**
- 80 channels
  - 144 channels
  - 256 channels



- (D) g.Nautilus**
- active-gel
  - active-dry
  - 8 channels
  - 16 channels
  - 32 channels



- Eyetracker (screen-mounted)
- Eyetracker (head-mounted)

g.GAMMAcap



Consumables

Electrodes

- active
- passive
- dry

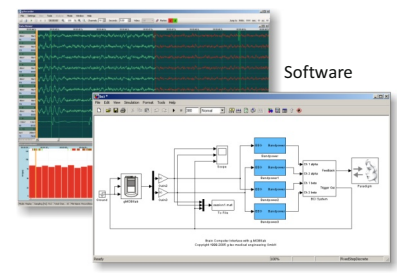


Impedance tester

Signal generator



VR-system

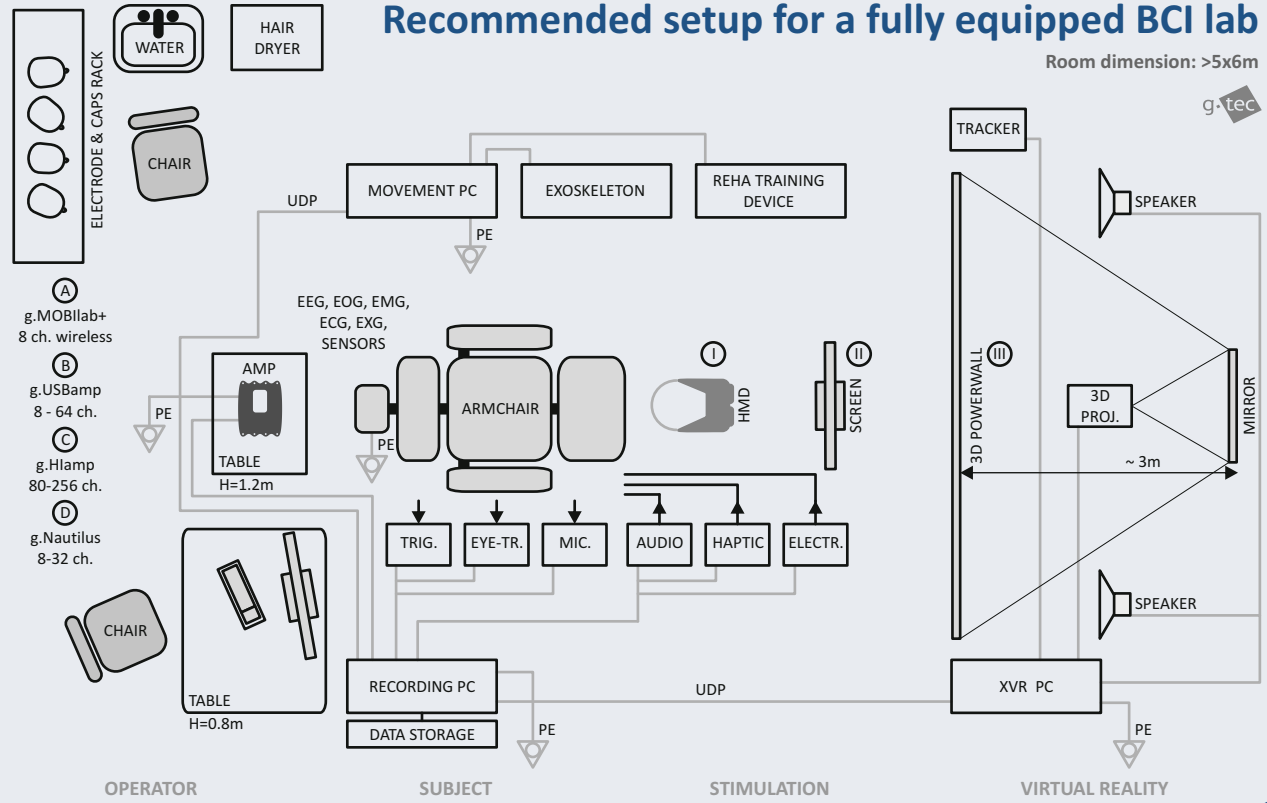


Software

- g.Recorder
  - g.BSanalyze
  - g.HIsys (Simulink)
  - g.HIsys (LabVIEW)
  - intendiX
  - BCi2000
  - C/MATLAB/Linux API
  - g.RTanalyze
  - g.PHYSIOobserver
  - g.UDPinterface
  - mindBEAGLE
  - cortiQ
  - Eyetracker interface
  - g.NEEdaccess
- Examples
- P300
  - Motor imagery
  - SSVEP
  - CSP/RehaBCi
  - Vibro-tactile P300
  - Ping-Pong game
  - Hyperscanning
  - Hybrid BCI
  - EMG/EOG control
- Training material
- EEG lecture
  - EP lecture
  - BCI lecture

## Recommended setup for a fully equipped BCI lab

Room dimension: >5x6m



g.tec medical engineering GmbH, office@gtec.at, www.gtec.at, tel. +43 7251 22240, fax +43 7251 22240 39 g.tec



- Sensors
- GSR
  - Blood pressure
  - Respiration
  - Temperature
  - Pulse
  - Acceleration
  - More sensors

Electrical stimulator



g.STIMbox

g.SSVEPbox

Request an offer for a complete lab

minimum  basic  advanced

Check products of interest and request an offer per fax (+43 7251 22240 39) or e-mail (office@gtec.at) !