



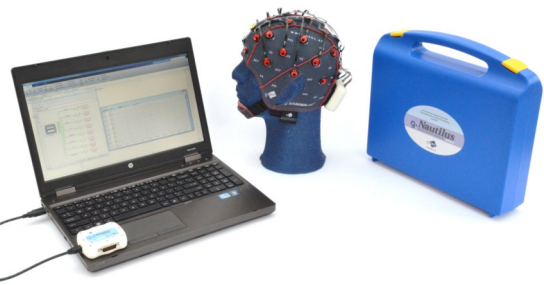
- (A) g.MOBilab+  EEG version  multi-purpose version



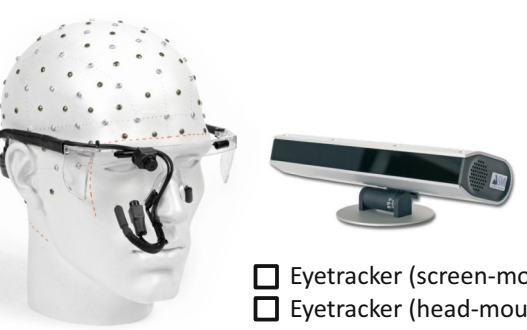
- (B) g.USBamp  16 channels  32 channels  48 channels  64 channels



- (C) g.HIamp  80 channels  144 channels  256 channels



- (D) g.Nautilus  active-gel  active-dry  EEG  multi-purpose  8 channels  16 channels  32 channels  64 channels



- Eyetracker (screen-mounted)  Eyetracker (head-mounted)



- g.GAMMAcap<sup>2</sup>  g.GAMMAcap<sup>3</sup>



- Consumables

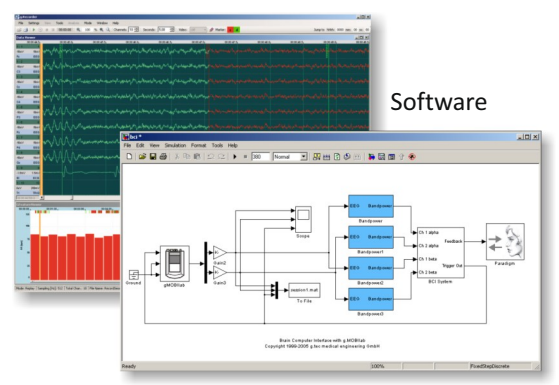
- Electrodes  active  passive  dry



- Impedance tester  Signal generator



- VR-system



- Software

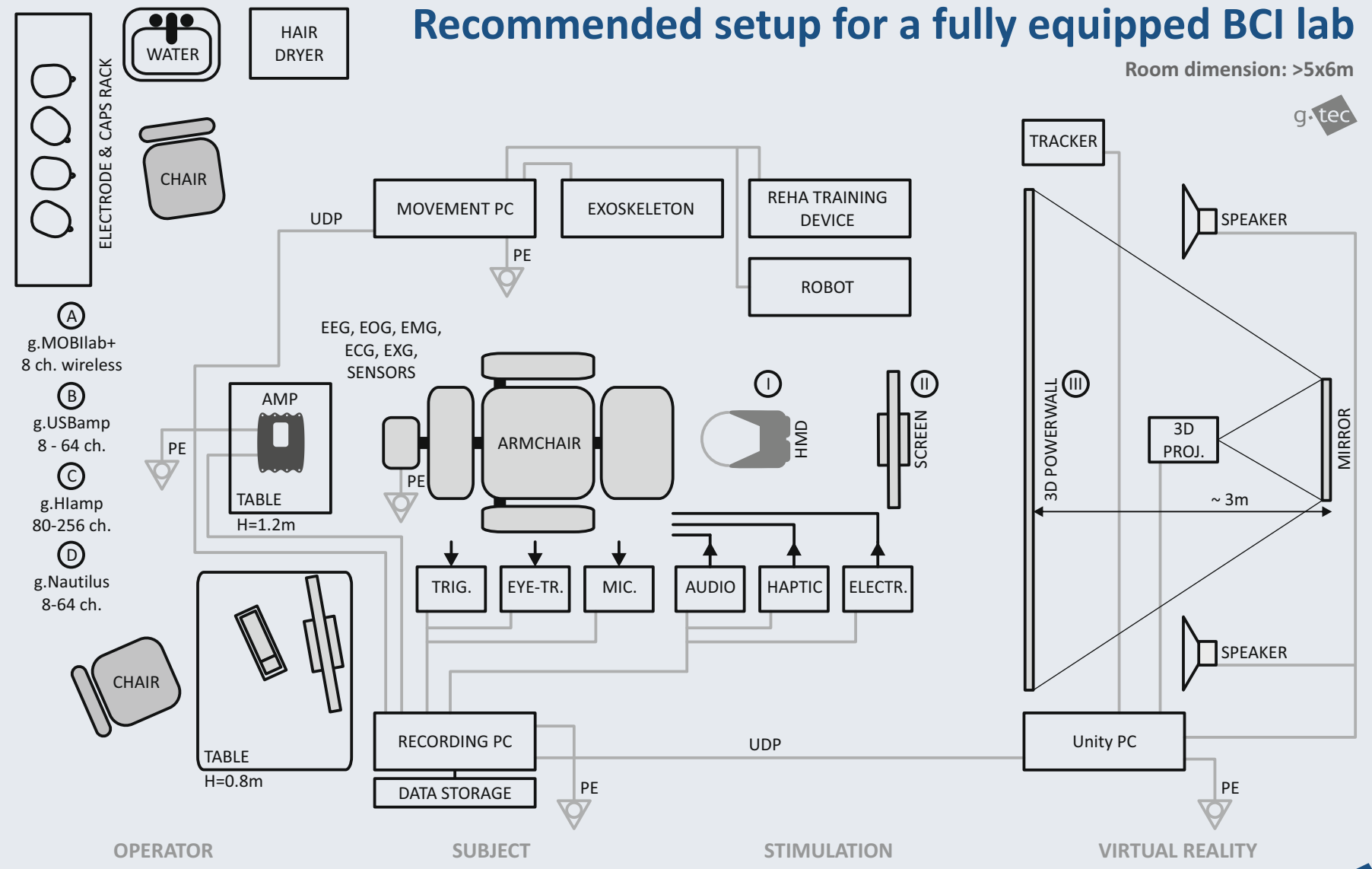
- g.Recorder  g.BSanalyze  g.HIsys (Simulink)  g.HIsys (LabVIEW)  intendiX  BCI2000  C/MATLAB/Linux API  g.rTanalyze  g.PHYSIOobserver  g.UDPinterface  mindBEAGLE  cortiQ  Eyetracker interface  g.NEEDaccess  MULTI-DEVICE toolbox  g.Estim interface  distributed EEG
- Examples  P300  Motor imagery  SSVEP  CSP/RehaBCI  Vibro-tactile P300  Ping-Pong game  Hyperscanning  Hybrid BCI  EMG/EOG control  CVEP/SOCI

- Training material  EEG lecture  EP lecture  BCI lecture  ECG lecture  PhysioObserver lecture  g.Nautilus Sports lecture

Request an offer for a complete lab  minimum  basic  advanced

## Recommended setup for a fully equipped BCI lab

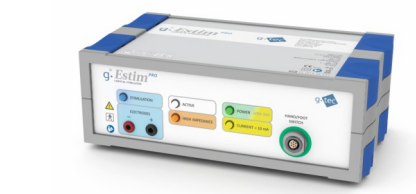
Room dimension: >5x6m



g.tec medical engineering GmbH, office@gtec.at, www.gtec.at, tel. +43 7251 22240, fax +43 7251 22240 39 g.tec



- Sensors  GSR  Blood pressure  Respiration  Temperature  Pulse  Acceleration  More sensors



- g.Estim PRO cortical stimulator  g.Estim FES electrical stimulator



- g.TRIGbox  g.SSVEPbox



- g.STIMbox  g.SSVEPbox

Check products of interest and request an offer per fax (+43 7251 22240 39) or e-mail (office@gtec.at) !