

Real-time EEG Analysis with Subject-Specific Spatial Patterns for a Brain-Computer Interface (BCI)

C. Guger¹, H. Ramoser¹, G. Pfurtscheller^{1,2}

¹Department of Medical Informatics, Institute of Biomedical Engineering

²Ludwig Boltzmann Institute of Medical Informatics and Neuroinformatics

University of Technology Graz

Inffeldgasse 16a, 8010 Graz, Austria

Contact : g.tec guger technologies

Plabutscherstr. 63, 8051 Graz, Austria

Tel.: (+43) 316 675106

Fax: (+43) 316 675106

e-mail: guger@gtec.at

Index Terms - Brain-computer interface (BCI), common spatial patterns (CSP), event-related desynchronization (ERD), real-time software

This work was supported by the "Fonds zur Förderung der wissenschaftlichen Forschung", project P11208-MED, by the "Allgemeine Unfallversicherungsanstalt (AUVA)", "Jubiläumfonds der Oesterreichischen Nationalbank", project 6774 and by the "Steiermärkische Landesregierung".

Abstract

Electroencephalogram (EEG) recordings during right and left motor imagery allow to establish a new communication channel for, e.g., patients with amyotrophic lateral sclerosis (ALS). Such an EEG-based brain-computer interface (BCI) can be used to develop a simple binary response for the control of a device. Three subjects participated in a series of on-line sessions to test if it is possible to use common spatial patterns to analyze EEG in real-time in order to give feedback to the subjects. Furthermore, the classification accuracy that can be achieved after only three days of training was investigated. The patterns are estimated from a set of multi-channel EEG data by the method of common spatial patterns, and reflect the specific activation of cortical areas. By construction common spatial patterns weight each electrode according to its importance to the discrimination task and suppress noise in individual channels by using correlations between neighboring electrodes. Experiments with three subjects resulted in an error rate of 2, 6 and 14 % during on-line discrimination of left and right hand motor imagery after 3 days of training and make common spatial patterns a promising method for an EEG-based brain-computer interface.

I. INTRODUCTION

Oscillatory Electroencephalogram (EEG) components have been used as an input signal for a brain-computer interface (BCI) [1, 2, 3]. Patients in a late stage of amyotrophic lateral sclerosis (ALS), for example, can communicate with their environment with such a system using a simple binary output signal to select letters, symbols or words on a computer-monitor [3] or to control a robotic device [4, 5]. In order to achieve appropriate human-computer interaction in these systems, it is necessary to extract reliable parameters from the EEG. Rhythmic EEG components (such as mu and beta rhythms) were used since sensorimotor rhythms display an event-related desynchronization (ERD) close to contralateral primary motor areas during hand movement imagination [6]. This focal amplitude attenuation of contralateral mu and beta components is also accompanied by enhancement (event-related synchronization, ERS) [7] of similar frequency components on the ipsilateral hemisphere. To properly record these focal changes, the EEG electrodes have to be located close to the primary sensorimotor areas. It has been reported that by utilizing two bipolar electrodes close to C3 and C4, a single EEG trial classification accuracy of 80 – 95% can be achieved after approximately 6 – 10 sessions [8, 9, 10]. However, since two bipolar derivations are insufficient to describe the overall brain activity, it seems reasonable to assume that more EEG signals recorded over sensorimotor areas, which are sensitive to differences between left and right imagery, would improve the classification accuracy of the BCI. Furthermore, although electrodes close to primary sensorimotor areas contain the most relevant information for discrimination [11], surrounding electrodes over premotor and supplementary motor areas also contribute some information to discriminate between brain states related to the motor imagery task.

The method of common spatial patterns (CSP) was first used in EEG analysis to extract abnormal components from the clinical EEG [12]. Recently, optimal spatial filters were devised for 56 EEG channels that lead to signals with optimal discriminatory power between 2 conditions [13]. This method weights each electrode according to its importance for the discrimination task and suppresses noise in individual channels by using correlations between neighboring electrodes. The classification rates for discriminating executed movements of the left and right index finger for three subjects were 84 %, 90 % and 94 %. Using the same method for data from a movement imagination task, an accuracy of 90.8 %, 92.7 % and 99.7 % was achieved for three other subjects in off-line analysis [14]. It was shown that the reference method (common average reference, bipolar, large Laplacian, small Laplacian and referenced to the ear [15]) had minor influence on the classification accuracy [14]. Fast and continuous feedback can also enhance the performance of the system [8, 16].

The purpose of this paper is:

- To test if it is possible to use common spatial patterns (CSP) to analyze the EEG in real-time in order to give feedback to the subject
- To determine the classification accuracy that can be achieved after only three days of training, when the CSP filter is adapted between sessions.

II. EEG RECORDING AND EXPERIMENTAL PARADIGM

Three subjects (17-26 years old, male) participated in this study. All were right-handed and free of medication and central nervous abnormality. All had previously served in a BCI study and were experienced in the experimental task. Subjects were paid per session.

Twenty-seven EEG electrodes (used to overlay the whole primary sensorimotor cortex), equally spaced with approximately 2.5 cm distance, were placed as shown in Figure 1 and referenced to the right ear. A referential recording was selected because a classification accuracy similar to other referencing methods can be achieved (CAR, bipolar, large Laplacian and small Laplacian) [14] and does not require additional processing time for re-referencing. The ground electrode was located on the forehead.

Electrooculogram (EOG) was derived from an electrode placed medially above the right eye and a second electrode laterally below the right eye to detect vertical and horizontal eye movements. Averaging the data over trials and calculation of the spectrum showed that none of the subjects showed Electromyogram (EMG) or EOG activity that could act as a control signal for the BCI.

Figure 1

The amplified EEG was bandpass filtered between 0.5 and 50 Hz and sampled at 128 Hz. The resolution was 12 bits. A notch filter was used to suppress the 50 Hz power line interference. An experimental procedure consisted of sessions with feedback, as shown in Figure 2, and of sessions without feedback. The timing of the non-feedback sessions was the same as of the feedback sessions (see Figure 2), except that the bar was not shown on the monitor.

Each session was divided into 4 or 5 (only for g3 and i2 in session 1) experimental runs of 40 trials, with randomized directions of the cues (20 left and 20 right) and lasted about 1 hour (including electrode application, breaks between runs and experimental preparation). Subjects g3 and g7 performed 6 sessions and subject i2 7 sessions.

Figure 2

III. DATA PREPROCESSING

A. Artifact Detection

For the setup of the common spatial patterns all trials were visually checked for artifacts in the time period 3-8 s (see Figure 2). Trials which contained artifacts (EMG or range overflow of analog to digital converter) were discarded, because the CSP method is very sensitive to artifacts. A single trial containing, for example, a movement artifact can cause severe changes in the CSP [13]. The reason is the sample covariance (non-robust estimate) which is used to estimate the covariance for the calculation of the spatial filters. During on-line operation of the BCI the spatial filters perform a weighted spatial averaging of the EEG and this reduces the influence of artifacts.

B. Temporal Filtering

All EEG channels were filtered (FIR filter) between 8 – 30 Hz, because this broad frequency range contains all mu and beta frequency components of the EEG which are important for the discrimination task [2]. Müller-Gerking [13] showed that classification accuracy of left hand movement, right hand movement and foot movement can be increased by using this broad range in comparison to narrow bands (alpha (8-12 Hz), lower alpha (8-10 Hz), upper alpha (10-12 Hz), beta (19-26 Hz) and theta (38-42 Hz)).

IV. COMMON SPATIAL PATTERNS

The method presented here uses the covariance to design common spatial patterns, and is based on the simultaneous diagonalization of two covariance matrices [17]. The decomposition (or filtering) of the EEG leads to new time series, which are optimal for the discrimination of 2 populations. The patterns are designed such that the signal which results from the EEG filtering with the CSP has maximum variance for left trials and minimum variance for right trials and vice versa. In this way the difference between left and right populations is maximized and the only information contained in these patterns is where the variance of the EEG varies most when comparing two conditions.

Given N channels of EEG for each left and right trial X , the CSP method gives an $N \times N$ projection matrix W according to [12, 13, 14]. This matrix is a set of N subject-specific spatial patterns which reflect the specific activation of cortical areas during hand movement imagination. With the projection matrix W the decomposition of a trial X is described by

$$Z=WX \tag{1}$$

This transformation projects the variance of X onto the rows of Z and results in N new time series. The columns of W^{-1} are a set of CSPs and can be considered as time-invariant EEG source distributions. After interpolation the patterns can be displayed as topographical maps.

By construction, the variance for a left movement imagination is largest in the first row of Z and decreases with the increasing number of the subsequent rows. The opposite is the case for a trial with right motor imagery.

For classification of the left and right trials the variances have to be extracted as reliable features of the newly designed N time series. But it is not necessary to calculate the variances of all N time series. The method provides a dimensionality reduction of the EEG. A high number of EEG channels (N) can be reduced to only a few time series and a few spatial patterns. Müller-Gerking investigated the number of projections (2, 4, 6, 8,...) to common spatial patterns used to build the feature vector [13] and showed that the optimal number of common spatial patterns used to build the feature vector is 4. After building W from an artifact corrected training set, only the first and last 2 rows ($p=4$) of W were used. The EEG data X is filtered with these p spatial filters. Then the variance of the resulting 4 time series is calculated for a time window T

$$VAR_p = \sum_{t=1}^T (Z_{p(t)})^2 \quad (2)$$

After normalizing and log-transforming, 4 feature vectors are obtained

$$f_p = \log \left(\frac{VAR_p}{\sum_{p=1}^4 VAR_p} \right) \quad (3)$$

The log-transformation is performed to normalize the distribution of the elements in f_p . These features f_p are used to construct a linear classifier [18, 19] referred as weight-vector (WV) in this paper.

V. DATA ANALYSIS AND CLASSIFICATION

Figure 3 shows an exemplary (subject g3) experimental procedure. In session 1 feedback is not provided. Next, based on the 27 channel EEG recording from the first session, the first CSP (CSP1) was established with artifact corrected data according to Table 1.

Table 1

All error rates presented in this paper were calculated from the entire data set (160 or 200 trials) of one session. Thus, the error is not biased by individual artifact detection.

Figure 3

The CSP for all three subjects was calculated for specific time segments distributed over the interval from second 3 to 8. For each direction only the 2 most important filters were used to calculate the features as described in Eqn. (3). The classification accuracy was calculated with a 10 times 10 fold cross-validation procedure of a linear discriminant for each time segment in order to find the window length best suited for classification. The 10 times 10 fold cross-validation mixes the data set randomly and divides it into 10 equally sized disjunct partitions. Each partition is then used once for testing; the other partitions are used for training. This results in 10 different error rates, which are averaged. This is the error of a 10 fold cross-validation. To further improve the estimate the procedure is repeated 10 times and again all error rates are averaged.

It was found that a higher accuracy can be achieved by increasing the window length, but this decreases the response time. The choice for all three subjects was setting the window length to 1 s, which has an accuracy in the range of a window length of 1.5 or 2 s and allows a fast feedback. Further decreasing the window length to 750, 500 or 250 ms results in performance loss for all subjects.

Figure 4 shows the three sets of spatial patterns for subject g3 underlying the EEG data of sessions 1, 4 and 5. The contour plots were calculated with a cubic interpolation of \mathbf{W}^{-1} . The patterns are plotted symmetrically to zero because within a pattern the coefficients seldomly cross the zero line and only the absolute values of the patterns are important.

Figure 4

Left hand movement leads to an event-related desynchronization over the contralateral primary sensorimotor area [6]. But at the same time an increase of the variance over the left hemisphere takes place. The pattern for left movement imagination is focused over electrode C3 in the most important filters of CSP2 and CSP3. However, the focus for filter CSP1 is more posterior. The second most important filters in Figure 4 show a more fuzzy variance distribution, but the maximum is also near to C3. For right hand movement imagination the focus is over C4 in the most important filters of CSP2 and CSP3. CSP1 shows a focus posterior to Cz. The second most important filters show a higher variance posterior to C4 in the case of CSP2 and CSP3 and around C3 at CSP1. Electrodes on the opposite side of the focus have coefficients close to zero. The patterns for the other subjects basically show the same structure.

After applying the most and second most important filter pairs to left and right trials 4 new time series were obtained. These temporal patterns for one left and one right hand movement imagination are displayed as EEG traces for visual interpretation in Figure 5.

Figure 5

Then the features obtained from Eqn. (3) with a one-second time window were used for further analysis. The classification accuracy was calculated with a 10 times 10 fold cross-validation of a linear discriminant for 0.5 s steps. The features of the classification time point with the lowest classification error were used to set up the subject-specific weight-vector with the linear discriminant analysis (LDA) for the experiments with feedback (see Figure 3). Table II gives an overview of the best classification time points over subjects and sessions. This off-line procedure, from reading the artifact corrected data from the harddisk until the availability of the new CSPs and WVs, takes about 30 min. The next session can be started immediately after calculation of the CSPs.

Table II

On the second day session 2 was performed with feedback. The 27 EEG channels were filtered with CSP1 in real-time (most and second most discriminating filters) as shown in Figure 6. After filtering, the variances of the resulting 4 time series were calculated for a one second window, normalized and also log-transformed. The resulting features were classified with WV1. This result was used to control the feedback bar on the monitor. The bar, varying in length, pointed to the left if the output of the linear classification was positive and to the right if negative. The absolute value of the classification result is a measure of how reliably the side was determined and controlled the length of the bar.

Figure 6

Then session 3 was performed without feedback in order to set up WV2. In session 4 WV2 and CSP1 were used to give feedback. On the third day with the data of session 4, a new CSP2 and WV3 were calculated and used in session 5. Then the update procedure of the CSP and WV was repeated again. It is of importance to point out that for those sessions conducted on the same days, the electrodes were applied only once, thereby minimizing any variations in placement for those sessions.

VI. RESULTS

The time courses of the on-line classification results of the feedback sessions are graphically presented in Figure 7 for all 3 subjects. A comparison of on-line error and the 10 times 10 fold cross-validation error calculated off-line is given in Table III. Altogether 13 sessions with feedback, consisting of 160 trials each, were held. Sessions 1 and 3 were performed without feedback, where the subjects were instructed to imagine a right or left hand movement right after the cue presentation. These results are not reported in Figure 7 because the EEG was not classified in real-time during these sessions. Sessions 2, 4, 5, 6 and 7 were performed with feedback. The feedback was shown on the monitor from second 4.25 until second 8 and was continuously updated in real-time with the CSPs and with the weight-vectors obtained in previous sessions according to Figure 3.

Figure 7

The on-line classification error ranged from 1.8 % to around 50 % for all classification time points and subjects. The lowest on-line error rate in the last sessions for g3 was 1.8 % (sec. 5.5), the lowest rate for g7 was 6.8 % (sec. 5 and 5.5) and for i2 14 % (sec. 5). In comparison, the lowest cross-validation error rate for subject g3 was 0 % (sec. 5.5), for g7 6.5 % (sec. 5.5) and for i2 8.7 % (sec. 5) for the same sessions as shown in Table III. The error rate increased slightly by 1.8 %, 0.3 % and 5.3 %, respectively, with the on-line classification. The reason for the difference is that the on-line result can be biased, meaning the feedback bar on the monitor is pointing slightly more in one direction.

Table III

It is important to note that the minimum classification error decreased from 18.8 % in the first feedback session to 1.8 % in the last session for subject g3, from about 50 % to 6.8 % for subject g7 and from about 50 % to 14 % for subject i2.

However, the results from the 3 subjects show basic differences:

- Subject g3 achieved an on-line classification error between 18.8 % and 31 % (between second 4.25 and 8) in the first feedback session. The update of the weight-vector after session 3 decreased the minimum error rate to 14.4 % at second 5.5. The update of the common spatial filter and of the weight-vector after session 4 had nearly no effect on the error rate in session 5. The minimum error rate remained constant. But the update of the CSP and of the WV after session 5 caused a decrease of the minimum error rate to 1.8 %, which corresponds to 3 misclassified trials out of 160. The time points of the minimum error rate always correspond to the

calculation time point of the weight-vector as shown in Table II. Therefore, the best classification time point was always known in advance.

- Subject g7 was not able to control the feedback bar in session 2. Table III clearly shows the difference between the on-line (around 50 %) and cross-validation (32.8 %) error rates. The cross-validation shows that the left and right hand movement imagination is separable, but the bar was always pointing in one direction. After calculating a new weight-vector from the data of session 3, the on-line error decreased from about 50 % in session 2 to 31% (sec. 5.5) in session 4. The update of the CSP and of the WV after session 4 clearly decreased the error rate to a minimum of 16.3 % (sec. 5.5). Similar to subject g3, the calculation of CSP3 and WV4 caused a decrease of the minimum error rate to 6.8 % (sec. 5 and 5.5). The best classification time point always corresponds to the calculation time point of the WV, except for session 5 (session 2 is not considered). The WV was set up at second 4.5, but the best classification time point was at second 5.5.
- Subject i2 was also not able to control the feedback bar in session 2. But Table III again shows, that the EEG was separable with a cross-validation error of 33.6 %. The bar was again pointing in only one direction. The WV update of the data of session 3 decreased the minimum on-line error rate to 12.5 % (sec. 5.5). In session 5 the same CSP and WV as in session 4 was used. The on-line error rates of both sessions are quite similar. After updating the CSP and the WV with the data of session 4 an increase of the error rate was observed in session 6. Repeating the update procedure of CSP and WV again decreased the minimum error rate to 14 % (sec. 5). Therefore, performance did not improve with CSP3 and WV4, in comparison to the results in sessions 4 and 5. In sessions 5, 6 and 7 the best classification time point corresponds with the calculation time point of the weight-vector (session 2 is not considered). In session 4 the best classification time point was 0.5 seconds later than the classification time point of the weight-vector.

VII. DISCUSSION

The paper demonstrates that the method of common spatial patterns can be used to analyze the EEG in real-time in order to give feedback to the subject. The method was utilized to give fast, continuous and accurate feedback during left and right hand movement imagination. Furthermore, the classification accuracy that can be achieved after only three days of training, when the CSP filter is adapted between sessions was determined. All three subjects were able to reduce their on-line classification error within 3 days to 2 % (g3), 6 % (g7) and 14 % (i2) in 6-7 sessions, respectively. However, it must be pointed out that subjects had participated prior to this study in 23 (g3), 5 (g7) and 7 (i2) BCI sessions using bandpower or adaptive autoregressive parameters (AAR) for the feedback calculation [2, 8, 16]. Usually 1-3 sessions were carried out per day which gives a training period of a few days. Results by Wolpaw and McFarland show that healthy subjects and spinal cord injury patients usually need several months to develop high accuracy (i.e., >90 %) using mu and beta frequency components [21]. Also Birbaumer's group reports about a training period of several months with slow cortical potentials to achieve accuracies of 65-80% for healthy subjects [22]. ALS-patients

were trained longer than a year [23]. For practical applications the training time must be minimized to increase the acceptance of the system and motivation of the BCI operator.

The error rates marked by brackets in Table III clearly show the influence of electrode position variations on different days and day-to-day subject's state variations:

On every new experimental day the electrodes have to be mounted anew. Therefore, the electrode positions can be expected to vary slightly between sessions on different days. The measured ERD pattern of sensorimotor rhythms can be completely different when the electrode position varies by e.g. 2.5 cm [24].

In session 1 cross-validation errors of 4 % (g3), 10.4 % (g7) and 15.8 % (i2) are achieved if the CSP calculated from session 1 is also used to classify the same data. A loss of performance can be observed in sessions 2, 3 and 4 on the 2nd day, whereby CSP1 from session 1 (1st day) was used, but beside changes in the subject's state also the electrode positions were not exactly the same as compared to the first day. After setting up CSP2 from session 4 and classifying the same session the error decreased again to 0.4 % (g3), 9 % (g7) and 3.4 % (i2). The same trend can be seen in session 5 of subject g3 and g7 and session 6 of subject i2. But the lower classification errors of 0.6 % (g3), 7.4 % (g7) and 8 % (i2) are now in the range of the error rates achieved in the next session, which are 0 % (g3), 6.5 % (g7) and 8.7 % (i2). There are two reasons for this:

- (i) both sessions were performed on the same day (3rd day) one after another and
- (ii) the electrode positions were exactly the same for the last two sessions.

Therefore, it is recommended not to apply the electrodes anew after setting up a new CSP for the following feedback sessions. However, further investigation is necessary to determine to which extent the difference in error rates can be attributed to variations in electrode applications and day-to-day subject's state variations. For long-term implications of this BCI approach EEG data of several sessions can be used for the calculation of the CSP. This allows the generation of a more robust filter in order to overcome the mentioned problems.

The study clearly showed that it is important to update the WV. For example, the reason for the 50 % error rate in feedback session 2 for subjects i2 and g7 was a biased classification result, meaning the feedback bar on the monitor was always extending in just one direction. Therefore, the on-line classification error was higher than the cross-validation error. This bias can be eliminated by setting up a new weight-vector.

A disadvantage of the CSP method is the large number of electrodes needed. Thus, extensive electrode application time and multichannel EEG analysis are required. The necessity for, e.g., a 27 channel EEG-amplifier system limits the use of the CSP as a portable BCI system but it is still wheelchair mountable. Further work is therefore necessary to search for the optimal number of electrodes. An off-line study with the CSP method has shown marginal differences in the classification accuracy of single trials with a binary motor imagery task when 18 electrodes were used, as compared to 56 electrodes [14]. The use of implanted electrodes in the future should solve the problem inherent in precisely applying a large number of electrodes and will provide freedom from muscle and

movement artifacts. Experimental setups with implanted electrode arrays are already being investigated [25, 26].

It is also important to remove artifacts for the setup of the common spatial patterns. During on-line operation of the BCI the spatial pattern performs a weighted averaging of the EEG and this reduces the artifacts.

The only parameters that must be adjusted for the CSP method are the time segment for the calculation of the CSP, and during on-line processing, the time window for the calculation of the variances. But the selection of these parameters is not very crucial.

An advantage of the CSP method is that it does not require a priori selection of subject-specific frequency bands as necessary for bandpower or frequency estimation methods [27, 28]. Although adaptive autoregressive parameter estimation methods (such as the recursive least squares algorithm) [2, 8, 29] also do not require a frequency band selection and operate with only two bipolar EEG signals, a cross-validation error of 0 % with the AAR model was never achieved. Experiments with the same paradigm and AAR together with the LDA approach resulted in lowest on-line errors for three subjects of 5%, 9 % and 9 % after 6-7 sessions (for details see [8]).

Long-term experimental series with 2 bipolar channels, using delayed feedback which presented the classification result at the end of each trial ('correct' or 'not correct') computed with bandpower and learning vector quantization (LVQ) approach, were carried out with 4 subjects. This type of experiment yielded to minimum on-line classification errors of around 10 %, 13 %, 14 % and 17 % after 7-14 sessions [2]. A direct comparison of results, however, is not possible, because only trained subjects, who also had participated in former series of experiments, were included in the present study.

We think that the inconvenience of applying more electrodes is rationalized by performance improvements with the method of common spatial patterns and will make a practical difference in patients requiring rehabilitation. One must consider that the most obvious strategy for achieving a higher speed of communication is to reduce the error rate. Even a small decrease of the error rate causes a high increase of the BCI bit rate.

ACKNOWLEDGEMENTS

We like to thank Britta Ortmayr, Christa Neuper and Thomas Strein for the valuable advice.

REFERENCES

- [1] J. Kalcher, D. Flotzinger, C. Neuper, S. Göilly and G. Pfurtscheller, "Graz brain-computer interface II: towards communication between humans and computers based on online classification of three different EEG patterns," *Med. Biol. Eng. Comput.*, vol. 34, pp. 382-388, 1996.
- [2] G. Pfurtscheller, C. Neuper, A. Schlögl and K. Lugger, "Separability of EEG signals recorded during right and left motor imagery using adaptive autoregressive parameters," *IEEE Trans. Rehab. Engng.*, vol. 6, pp. 316-325, 1998.
- [3] J.R. Wolpaw and D.J. McFarland, "Multichannel EEG-based brain-computer communication," *Electroenceph. Clin. Neurophysiol.*, vol. 90, pp. 444-449, 1994.
- [4] C. Guger, W. Harkam, C. Hertnaes and G. Pfurtscheller, "Prosthetic control by an EEG-based brain-computer interface (BCI)," *in Proc. AAATE '99*, 1999, pp. 590-595.
- [5] L.M. Nirenberg, J. Hanley and E.B. Stear, "A new approach to prosthetic control: EEG motor signal tracking with an adaptively designed phase-locked loop," *IEEE Trans. Biomed. Engng.*, vol. 18, pp. 389-398, 1971.
- [6] G. Pfurtscheller and C. Neuper, "Motor imagery activates primary sensorimotor area in humans," *Neurosci. Lett.*, vol. 239, pp. 65-68, 1997.
- [7] G. Pfurtscheller, A. Stancák Jr. and C. Neuper: "Event-related synchronization (ERS) in the alpha band – an electrophysiological correlate of cortical idling: A review," *Int. J. of Psychophysiol.*, vol. 24, pp. 39-46, 1996.
- [8] C. Guger, A. Schlögl, C. Neuper, D. Walterspacher, T. Strein and G. Pfurtscheller, "Rapid prototyping of an EEG-based brain-computer interface (BCI)," *IEEE Trans. Rehab. Engng.*, vol. 9, pp. 1-10, 2000.
- [9] D.J. McFarland, L.M. McCane and J.R. Wolpaw, "EEG-based communication and control: short-term role of feedback," *IEEE Trans. Rehab. Engng.*, vol. 6, pp. 7-11, 1998.
- [10] G. Pfurtscheller, C. Neuper, D. Flotzinger and M. Pregenzer, "EEG-based discrimination between imagination of right and left hand movement," *Electroenceph. Clin. Neurophysiol.*, vol. 103, pp. 642-651, 1997.
- [11] G. Pfurtscheller, C. Neuper, and J. Berger, "Source localization using event-related desynchronization (ERD) within the alpha band," *Brain Topography*, vol. 6, pp. 269-275, 1994.

- [12] Z.J. Koles, "The quantitative extraction and topographic mapping of the abnormal components in the clinical EEG," *Electroenceph. Clin. Neurophysiol.*, vol. 79, pp. 440-447, 1991.
- [13] J. Müller-Gerking, G. Pfurtscheller and H. Flyvbjerg, "Designing optimal spatial filters for single-trial EEG classification in a movement task," *Clin. Neurophysiol.*, vol. 110, pp. 787-798, 1999.
- [14] H. Ramoser, J. Müller-Gerking and G. Pfurtscheller, "Optimal spatial filtering of single-trial EEG during imagined hand movement," *IEEE Trans. Rehab. Engng.*, 2000, in revision.
- [15] D.J. McFarland, L.M. McCane, S.V. David and J.R. Wolpaw, "Spatial filter selection for EEG-based communication," *Electroenceph. Clin. Neurophysiol.*, vol. 103, pp. 386-394, 1997.
- [16] C. Neuper, A. Schlögl and G. Pfurtscheller, "Enhancement of left-right sensorimotor EEG differences during feedback-regulated motor imagery", *J. Clin. Neurophysiol.*, vol. 16, pp. 373-382, 1999.
- [17] K. Fukunaga, *Introduction to statistical pattern recognition*. New York: Academic Press, 1972.
- [18] C.M. Bishop, *Neural Networks for Pattern Recognition*. Oxford, U.K.: Clarendon, 1995.
- [19] K. Lugger, D. Flotzinger, A. Schlögl, M. Pregenzer and G. Pfurtscheller, "Feature extraction for on-line EEG classification using principal components and linear discriminants", *Med. Biol. Eng. Comput.*, vol. 36, pp. 309-314, 1998.
- [20] C. Guger, A. Schlögl, D. Walterspacher and G. Pfurtscheller, "Design of an EEG-based brain-computer interface (BCI) from standard components running in real-time under Windows," *Biomed. Technik*, vol. 44, pp. 12-16, 1999.
- [21] J.R. Wolpaw, H. Ramoser, D.J. McFarland and G. Pfurtscheller, "EEG-based communication: Improved accuracy by response verification," *IEEE Trans. Rehab. Engng.*, vol. 6, pp. 326-333, 1998.
- [22] B. Kotchoubey, H. Schleichert, W. Lutzenberger and N. Birbaumer, "A new method for self-regulation of slow cortical potentials in a timed paradigm," *Applied Psychophysiology and Biofeedback*, vol. 22, pp. 77-93, 1997.
- [23] N. Birbaumer, N. Ghanayim, T. Hinterberger, I. Iversen, B. Kotchoubey, A. Kübler, J. Perelmouter, E. Taub, and H. Flor, "A spelling device for the paralysed," *Nature*, vol. 398, pp. 297-298, 1999.
- [24] G. Pfurtscheller, A. Stancák Jr., and G. Edlinger, "On the existence of different types of central beta rhythms below 30 Hz," *Electroenceph. Clin. Neurophysiol.*, vol. 102, pp. 316-325, 1997.

- [25] E.M. Maynard, C.T. Nordhausen, and R.A. Normann, "The Utah intracortical electrode array: a recording structure for potential brain-computer interfaces," *Electroenceph. Clin. Neurophysiol.*, vol. 102, pp. 228-239, 1997.
- [26] S.P. Levine, J.E. Huggins, S.L. BeMent, R.K. Kushwaha, L.A. Schu, D.A. Ross, and M.M. Rohde, "Detection of event-related potentials for development of a direct brain interface," *Journal of Clinical Neurophysiology*, vol. 16, pp. 439-447, 1999.
- [27] D.J. McFarland, A.T. Lefkowitz, and J.R. Wolpaw, "Design and operation of an EEG-based brain-computer interface (BCI) with digital signal processing technology," *Behav. Res. Meth. Instr. Comput.*, vol. 29, pp. 337-345, 1997.
- [28] G. Pfurtscheller, J. Kalcher, C. Neuper, D. Flotzinger and M. Pregenzer, "On-line EEG classification during externally-paced hand movements using a neural network-based classifier," *Electroenceph. Clin. Neurophysiol.*, vol. 99, pp. 416-425, 1996.
- [29] A. Schlögl, D. Flotzinger and G. Pfurtscheller, "Adaptive autoregressive modeling used for single-trial EEG classification," *Biomed. Technik*, vol. 42, pp. 162-167, 1997.

Christoph Guger was born on March 1, 1973. He received his M.Sc. degree in electrical engineering and the Ph.D. degree in biomedical engineering from the Graz University of Technology, Austria, in 1997 and 1999, respectively.

He is currently working as Assistant Professor at the Institute of Biomedical Engineering, Graz University of Technology. His research interests are real-time processing systems and brain-computer communication systems. 1999 he founded the medical and electrical engineering company g.tec.

Herbert Ramoser was born August 4, 1970. He studied Telematics (computer science) and received his MS degree 1997 from the Graz University of Technology, Austria.

Currently he is working at the Graz University of Technology as Research Assistant. His interests are time-series analysis and neural networks.

Gert Pfurtscheller received the M.Sc. and Ph.D. degrees in electrical engineering from Graz University of Technology, Austria, in 1964 and 1966, respectively.

He is a Professor of medical informatics at the Institute of Biomedical Engineering at the Graz University of Technology. Since 1982, he has been Head of the Department of Medical Informatics and since 1987, Director of the Ludwig Boltzmann-Institute for Medical Informatics and Neuroinformatics. He has authored more than 300 scientific articles and four books. His scientific interests and current research work include biomedical signal processing with special emphasis on electrical brain activity analysis, brain computer communication systems, and medical expert systems.

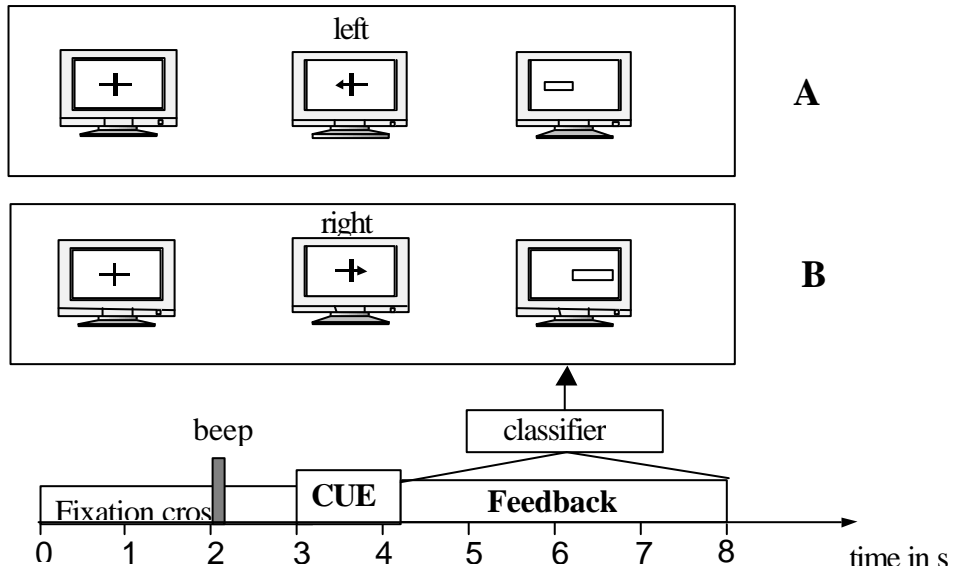


Figure 2

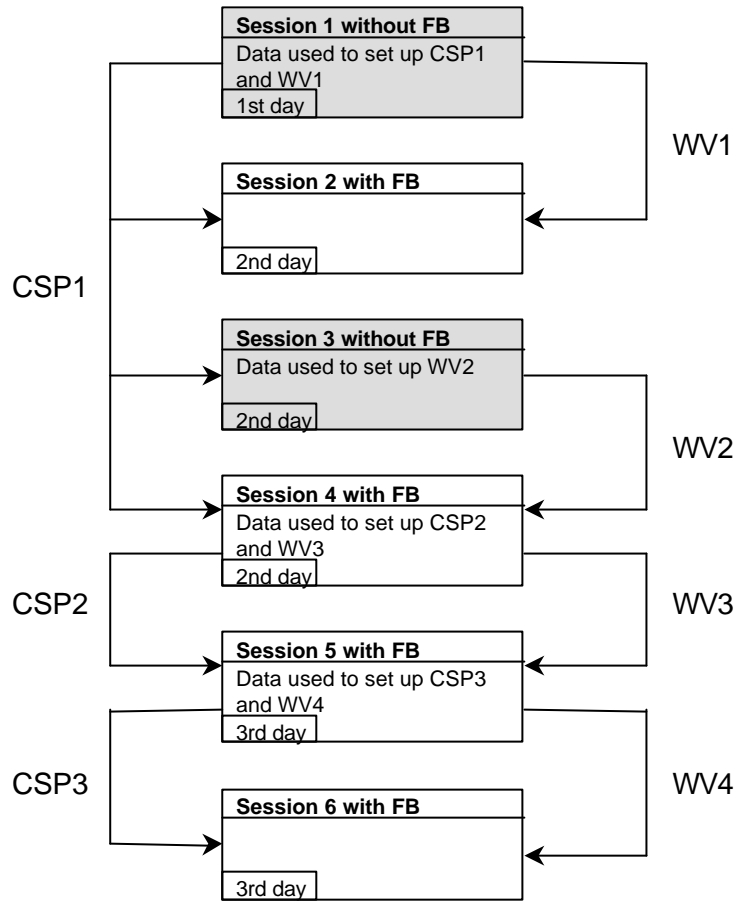


Figure 3

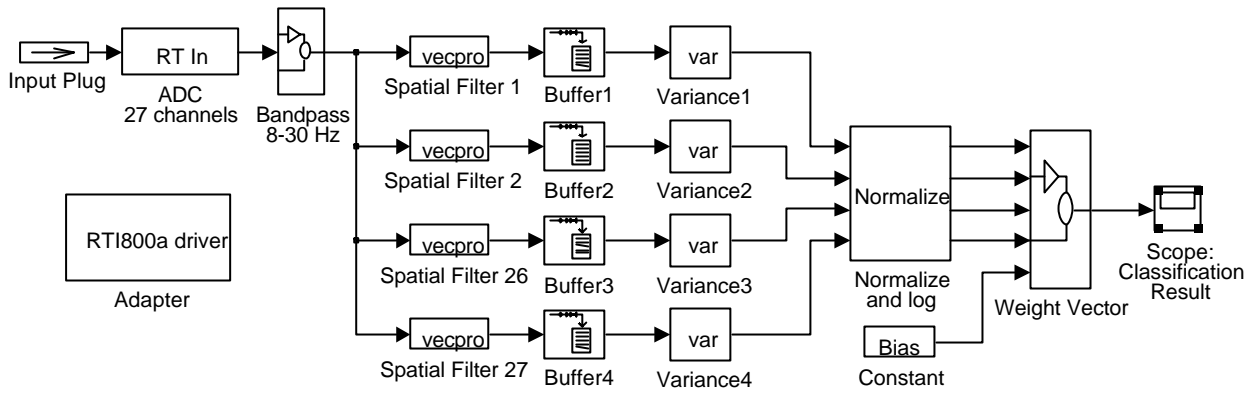


Figure 6

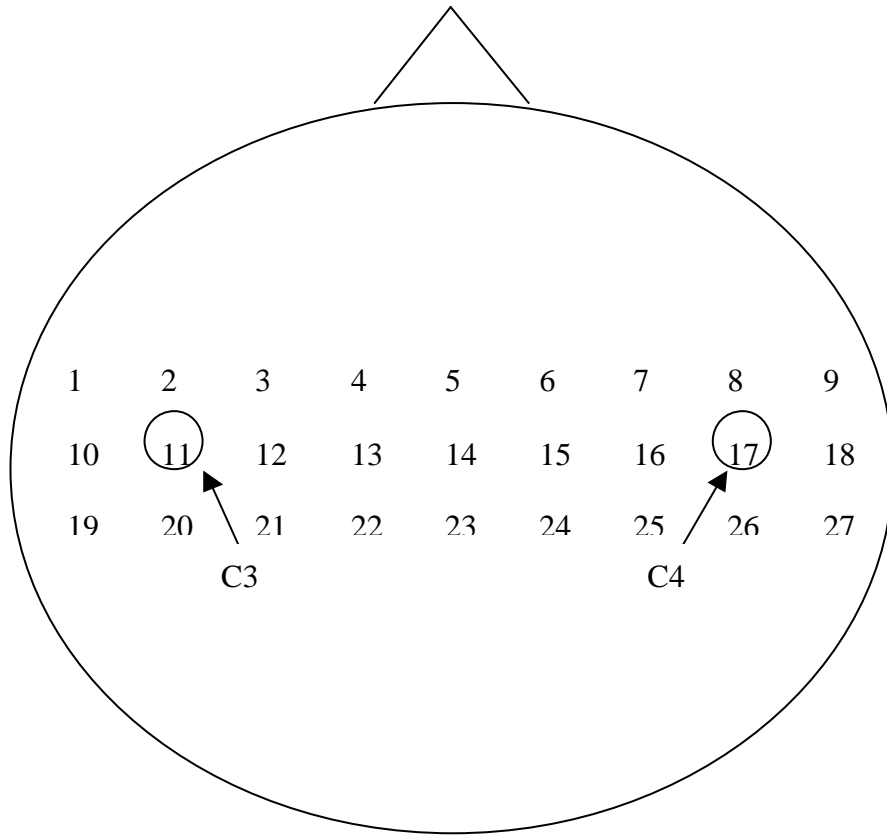


Figure 1

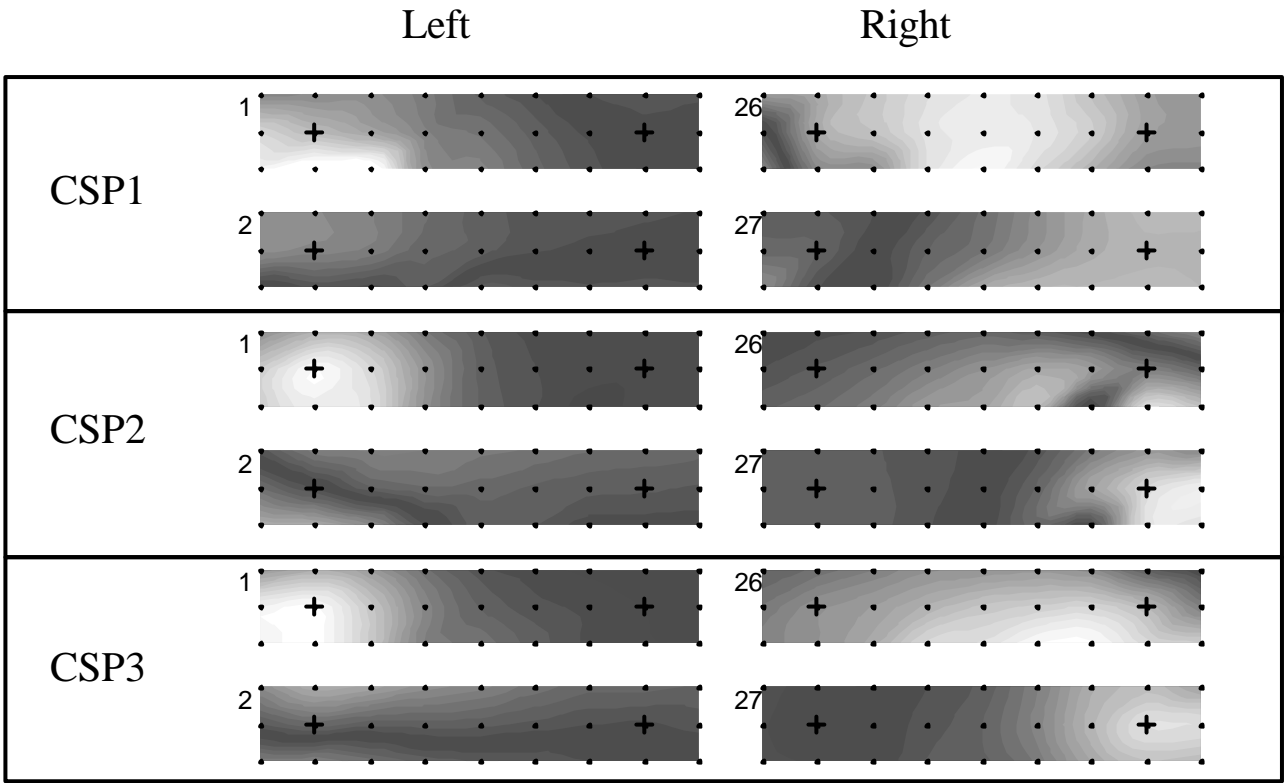
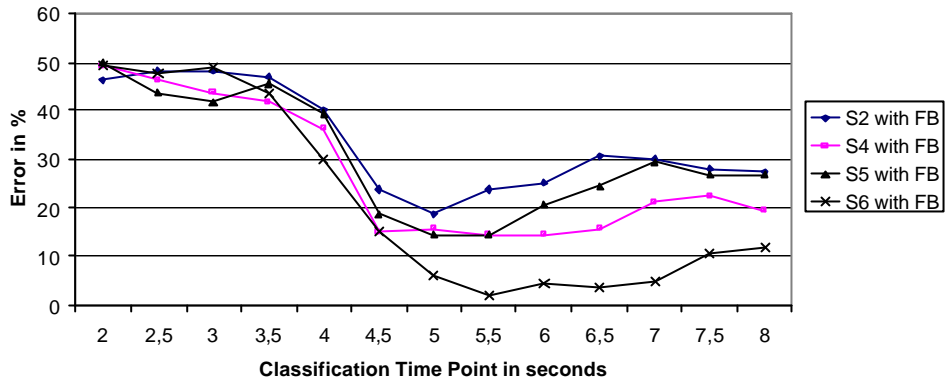
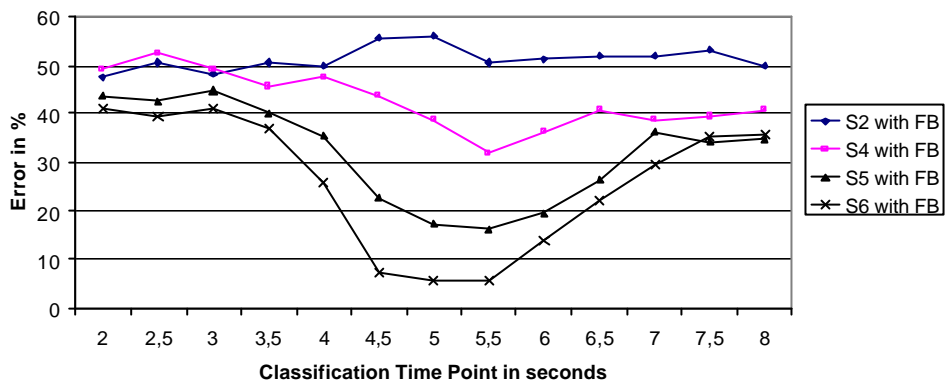


Figure 4

On-line Classification Results: Subject g3, 27 channel CSP



On-line Classification Results: Subject g7, 27 channel CSP



On-line Classification Results: Subject i2, 27 channel CSP

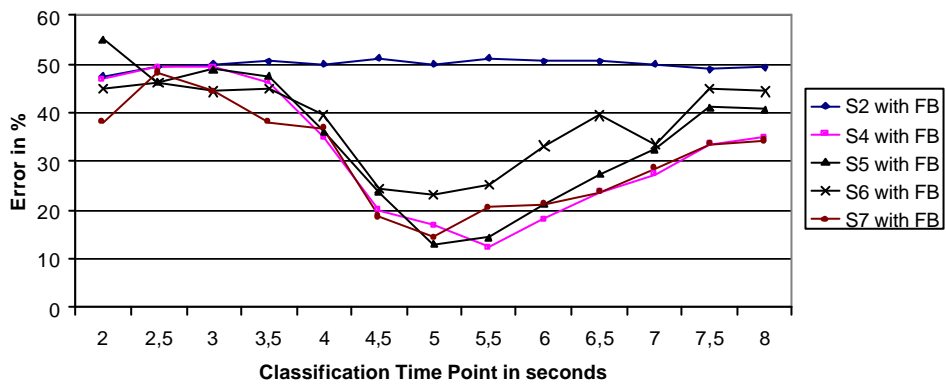


Figure 7

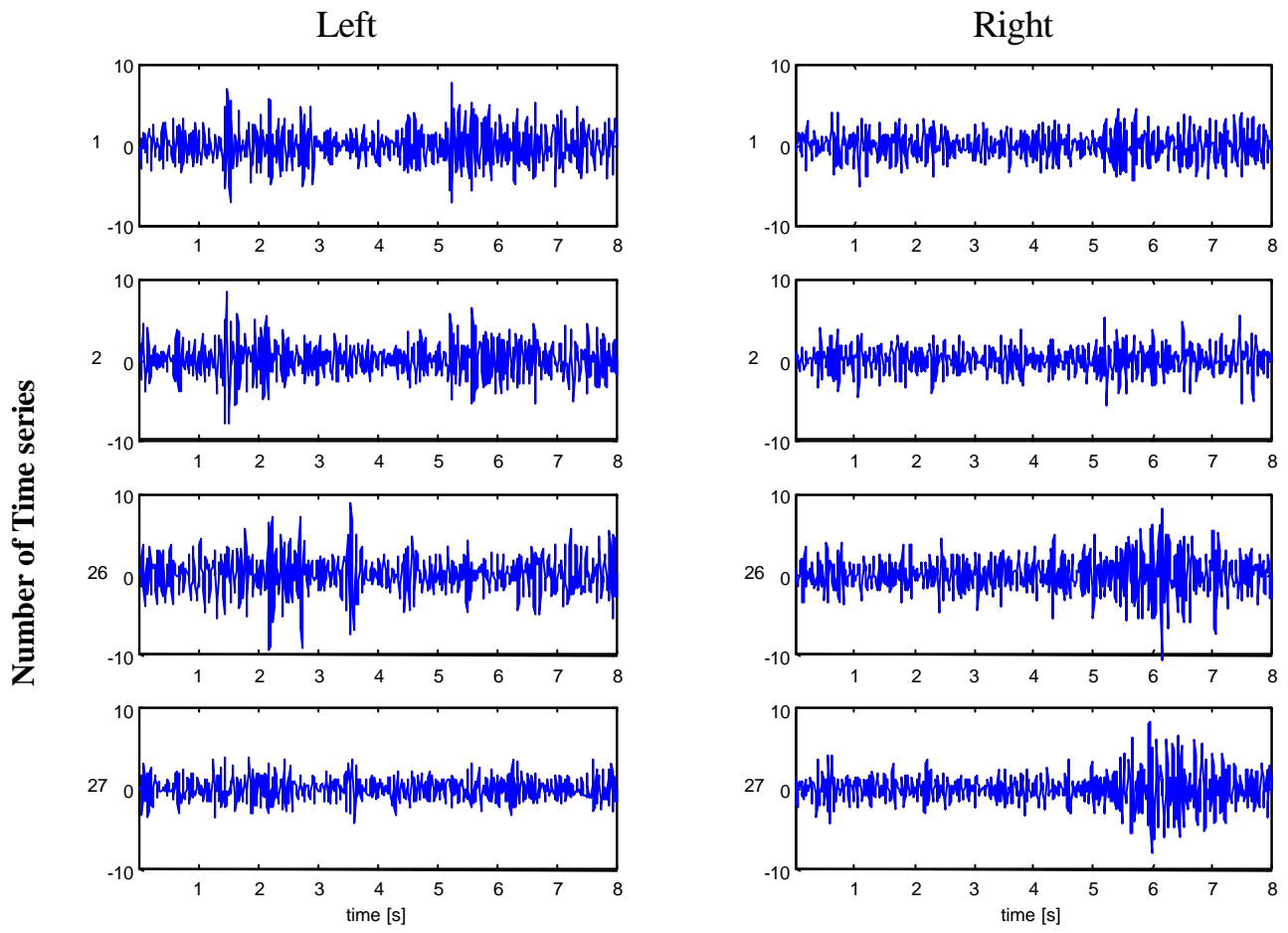


Figure 5

LEGEND OF FIGURES

Figure 1: Electrode positions. The 27 Ag/AgCl electrodes overlie the sensorimotor areas, which are activated during right and left hand movement imagination. Electrodes 11 and 17 correspond to C3 and C4 of the international electrode system.

Figure 2: Timing of one trial of the experiment with feedback. The subject sat in a comfortable armchair 150 cm in front of a computer-monitor and was instructed not to move and to keep both arms and hands relaxed and to maintain throughout the experiment the fixation at the center of the monitor. The experiment started with the display of a fixation cross that was shown in the center of a monitor. After two seconds a warning stimulus was given in form of a "beep". From second 3 until 4.25 an arrow (cue stimulus), pointing to the left or right, was shown on the monitor. The subject was instructed to imagine a left or right hand movement, depending on the direction of the arrow. Between second 4.25 and 8, the EEG was classified on-line and the classification result was translated into a feedback stimulus in form of a horizontal bar that appeared in the center of the monitor. If the person imagined a left movement, then the bar, varying in length, extended to the left as shown in A and vice versa in B (correct classification assumed). The subject's task was to extend the bar toward the left or right boundary of the monitor, indicated by the arrow cue.

One trial lasted 8 seconds and the time between two trials was randomized in a range of 0.5 to 2.5 seconds to avoid adaptation.

Figure 3: Flowchart of 6 BCI sessions with and without (gray boxes) feedback (FB) for subject g3. Altogether 3 common spatial filters (CSP) and 4 weight-vectors (WV) were set up. The sessions were performed within 3 days. Subject i2 participated in one session more after session 4, but the update procedure of the CSPs and WVs was similar to the one shown on this flowchart.

Figure 4: Maps of the three calculated sets of common spatial patterns for subject g3 of session 1 (CSP1), 4 (CSP2) and session 5 (CSP3). The small black dots indicate the 27 electrode positions. C3 and C4 are marked by the cross. The CSPs with index 1 and 27 are the most and 2 and 26 are the second most discriminating filters. Electrodes surrounded by black areas are of lower importance to the dicrimination task than electrodes surrounded by lighter colors.

Figure 5: Time series after filtering with the 2 most important (1, 27) and 2 second most important (2, 26) common spatial patterns according to (1). The filter was constructed in such a way that the variance in filter 1 and 2 will be maximized during a left hand movement imagination and minimized in filter 26 and 27. The left column shows the new time series of a left trial, the right column of a right trial. By comparing the most discriminating time series (1 and 27) a high amplitude difference can be observed. When comparing the second most important time series (2 and 26) still a difference can be seen, albeit a smaller one.

The opposite is the case for the right trial. The variance in time series 1 and 2 is smaller than in 26 and 27.

Figure 6: Simulink model for the real-time analysis of the EEG.

A device driver for the RTI800a (DAQ board of Analog Device) makes the connection to the real world. In this case the input block represents analog input channels 1 to 28 (EEG#1 to EEG#27, Trigger). Channels 1 to 27 are bandpass filtered between 8 and 30 Hz. The output signal is then passed to the two most (Spatial Filter 1 and Spatial Filter 27) and two second most (Spatial Filter 2 and Spatial Filter 26) discriminating common spatial filters. After temporal and spatial filtering, the variances of the resulting 4 time series were calculated for a one second window, normalized and also log-transformed. The resulting features were classified with the weight-vector (WV). This result was used to control the feedback bar on the monitor. A detailed description of the hardware and software components is given in [8, 20].

Figure 7: Time course of the on-line classification error (100% minus accuracy), starting one second before visual cue stimulus. Subjects participated in 4 (g3 and g7) or 5 (i2) sessions with feedback.

LEGEND OF TABLES

Table I: Amount of trials for the setup of the CSPs over subjects after artifact correction. Session 1 of g3 and i2 originally consisted of 200 trials, all other sessions of 160 trials.

Table II: Classification time points (C.T.P.) of the weight-vectors (WV) according to subject and session. The WV was always set up from the best classification time point achieved with a 10 times 10 cross-validation with the actual CSP. Gray boxes indicate sessions without feedback.

Table III: The cross-validation (CV Error) error rates for sessions without (gray boxes) and with feedback (white boxes) are shown for the best classification time point. The on-line error rates were only calculated for feedback sessions. Values in brackets indicate error rates achieved with a CSP that was set up of the data of the same session.

Subject	CSP 1	CSP 2	CSP 3
g3	176	148	137
g7	150	125	122
i2	173	100	141

Table I

Subject	Session-number	C.T.P. of WV [s]
g3	1	5
	3	5.5
	4	5.5
	5	5.5
g7	1	7
	3	5.5
	4	4.5
	5	5
i2	1	5
	3	5
	4	5
	6	5

Table II

Session-Number/ Day	g3		g7		i2	
	CV Error [%]	On-line Error [%]	CV Error [%]	On-line Error [%]	CV Error [%]	On-line Error [%]
1/ 1	(4)	-	(10.4)	-	(15.8)	-
2/ 2	13.9	18.8	32.8	50	33.6	50
3/ 2	16.8	-	31.2	-	24.2	-
4/ 2	11.5 (0.4)	14.4	28.9 (9)	31	10.9 (3.4)	12.5
5/ 3	12.8 (0.6)	14.4	14.1 (7.4)	16.3	14	13
6/ 3	0	1.8	6.5	6.8	17.1 (8)	23
7/ 3					8.7	14

Table III

